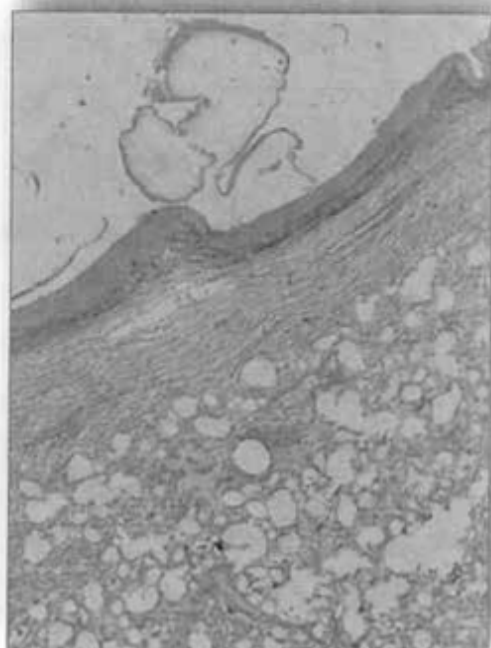


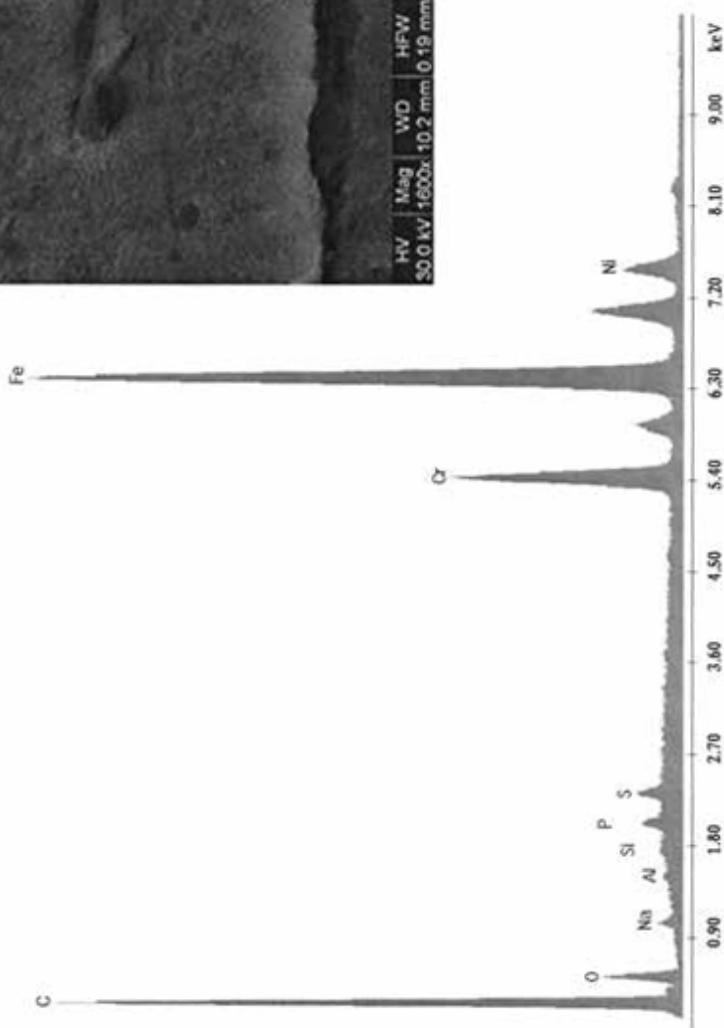
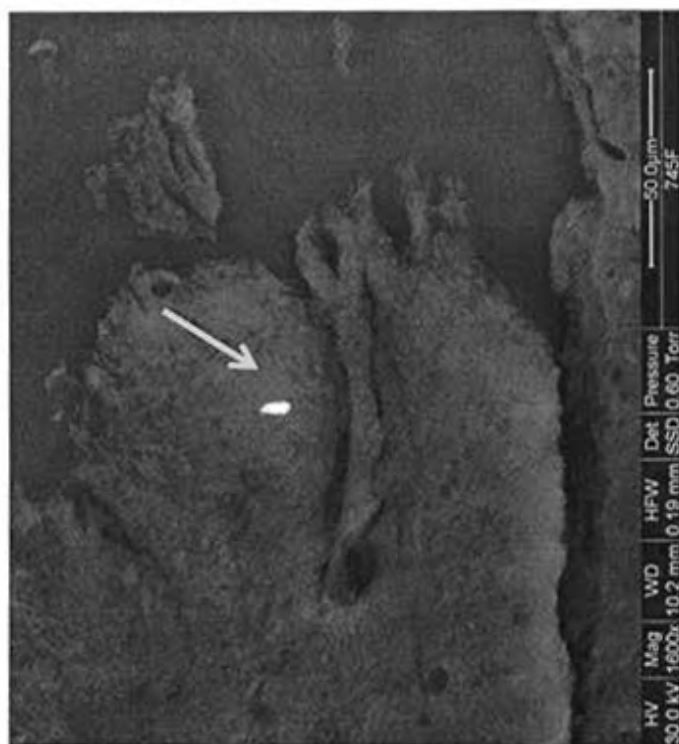
sezione istologica di fegato con  
formazioni granulomatose  
di probabile natura parassitaria,  
e-e, 4 x



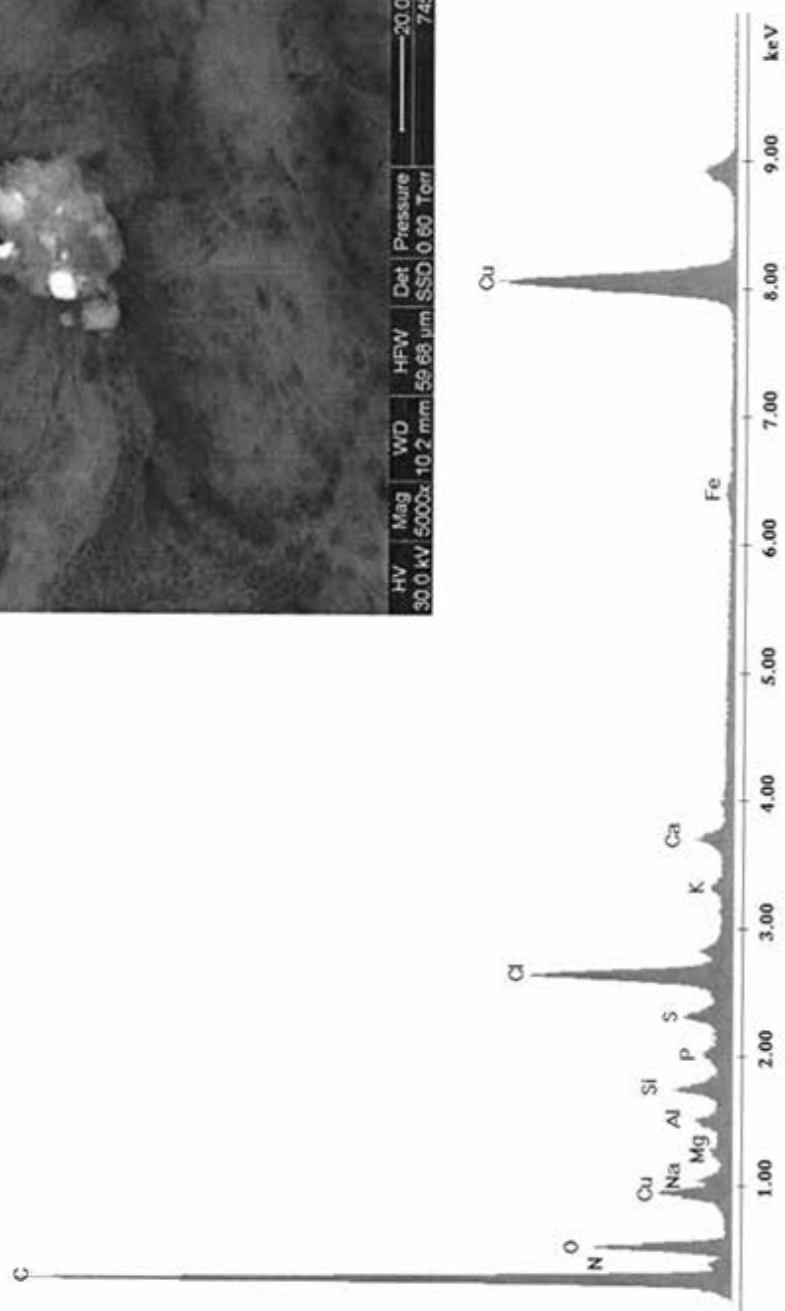
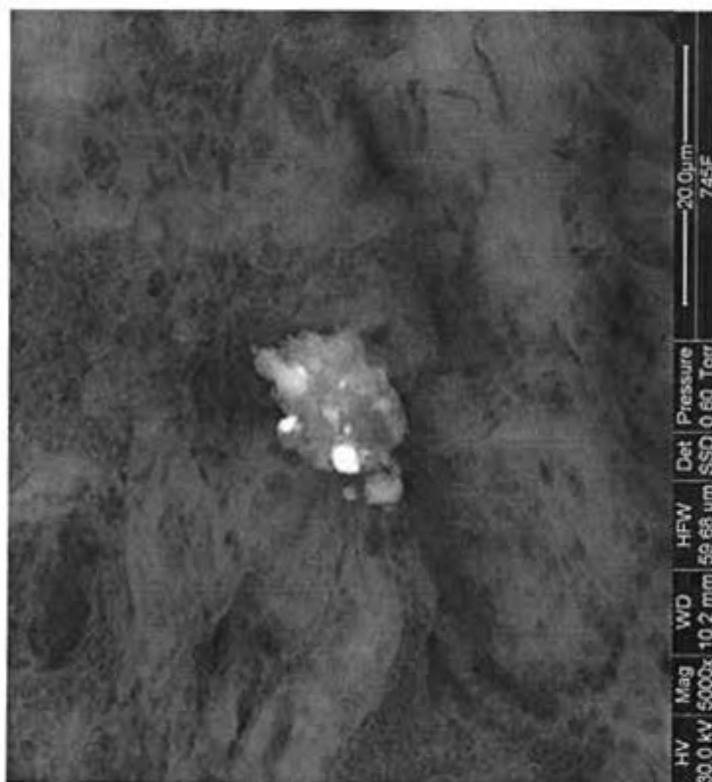
cisti parassitaria a livello  
polmonare,  
e-e, 2x

Campione 745 — capra di 6 anni IT072NU129

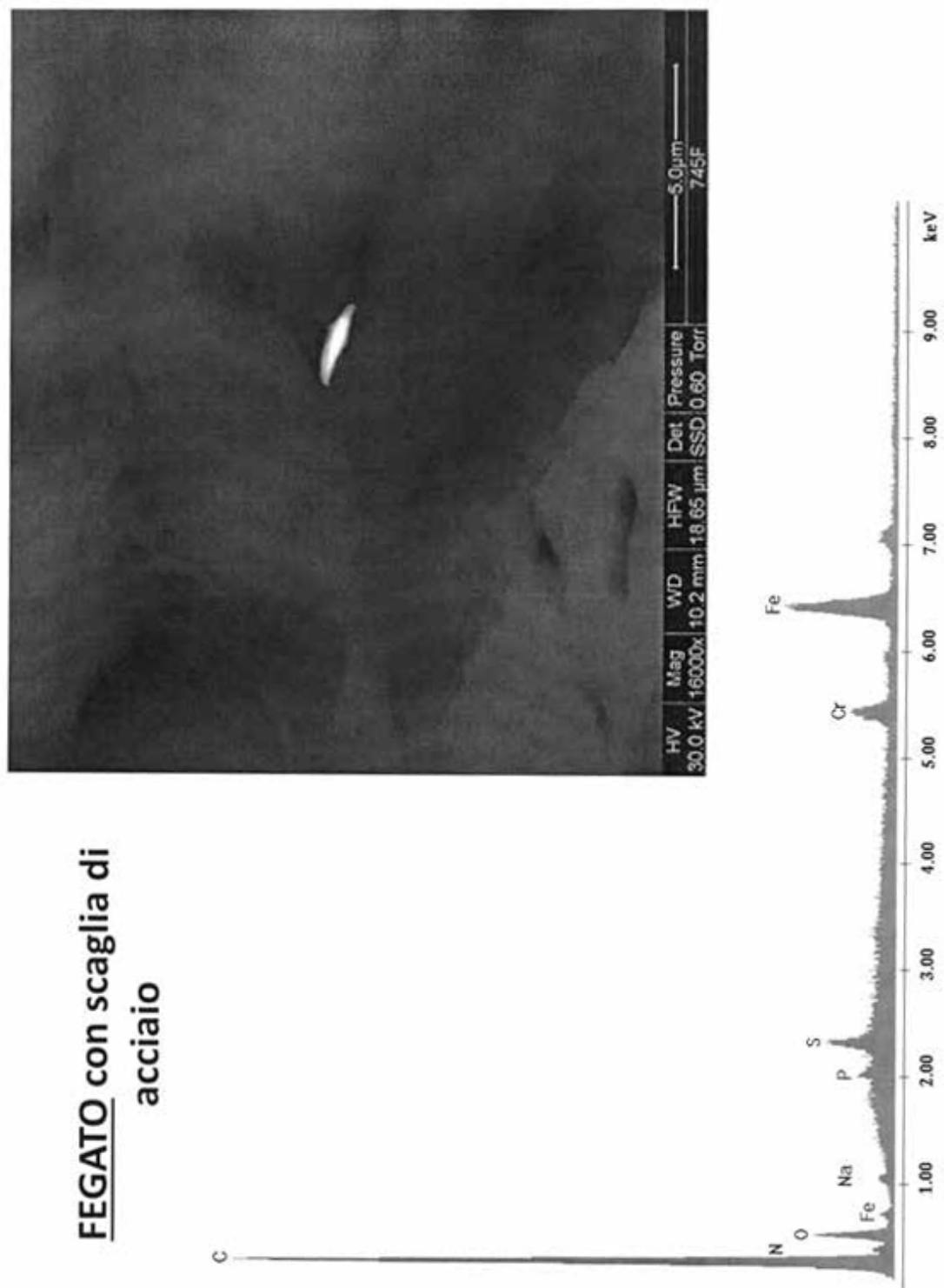
**FEGATO** con detrito di acciaio



**FEGATO con agglomerato  
di detriti contenenti  
Rame**

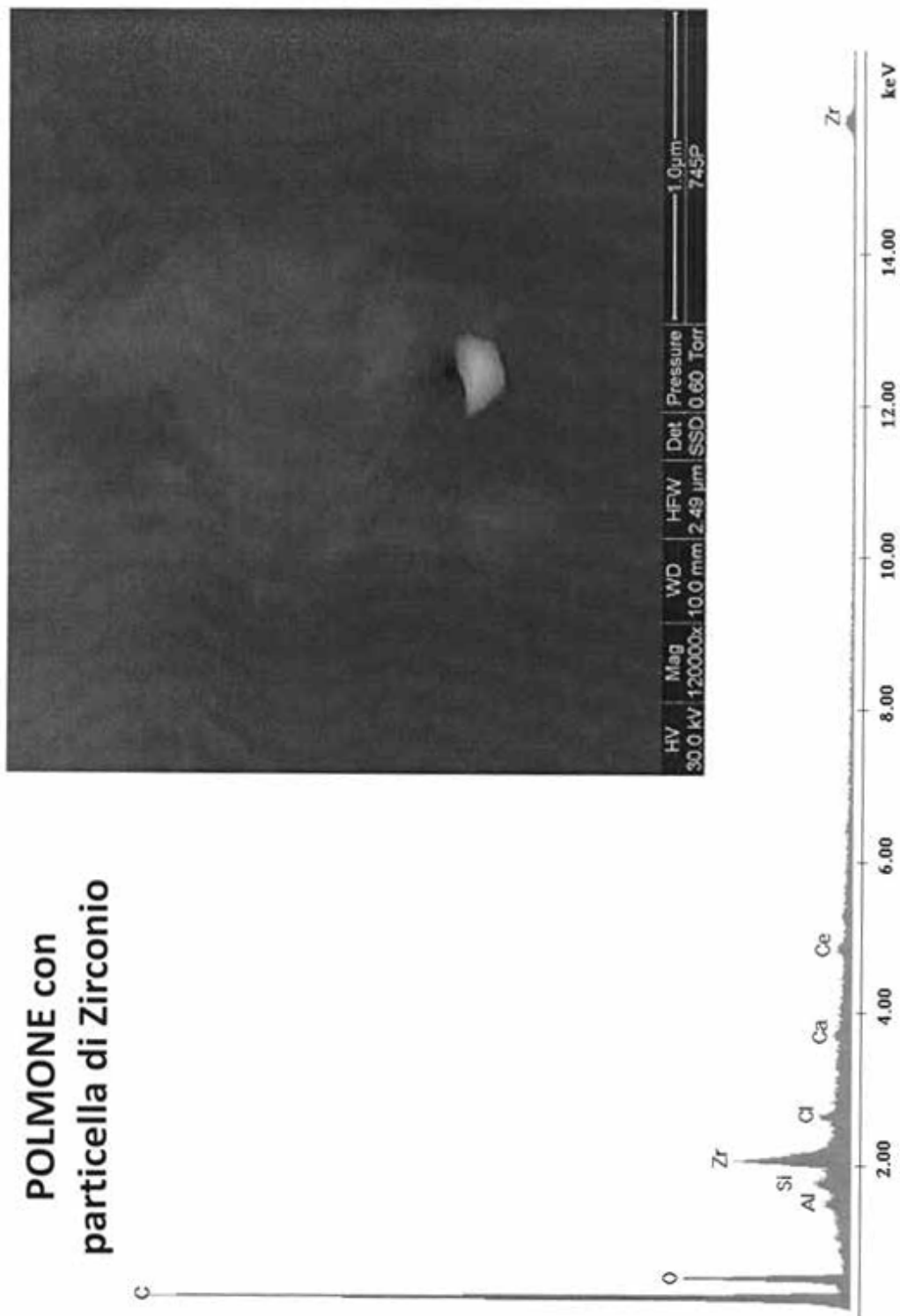


**FEGATO con scaglia di  
acciaio**

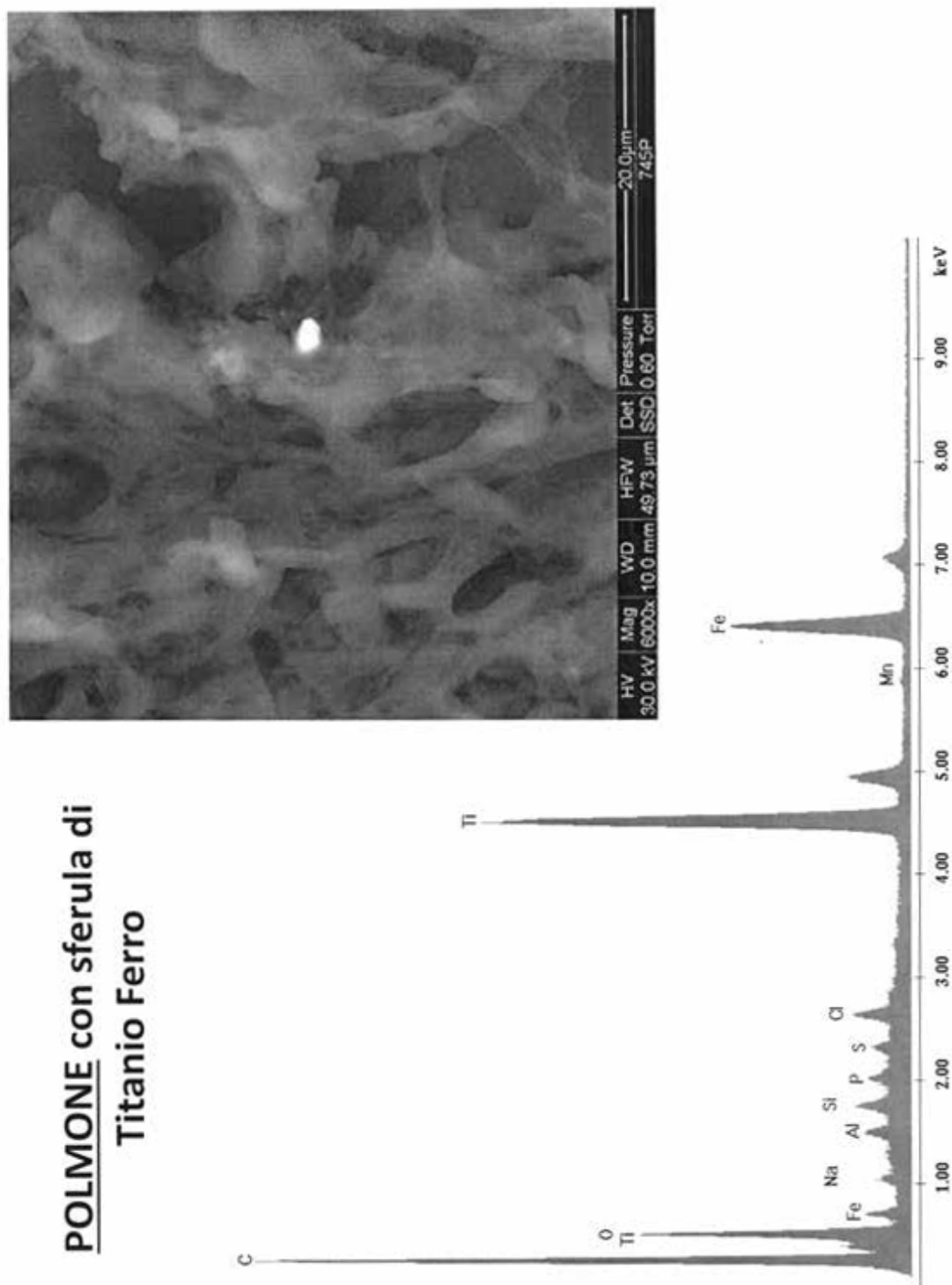


Campione 745 — capra di 6 anni IT072NU129

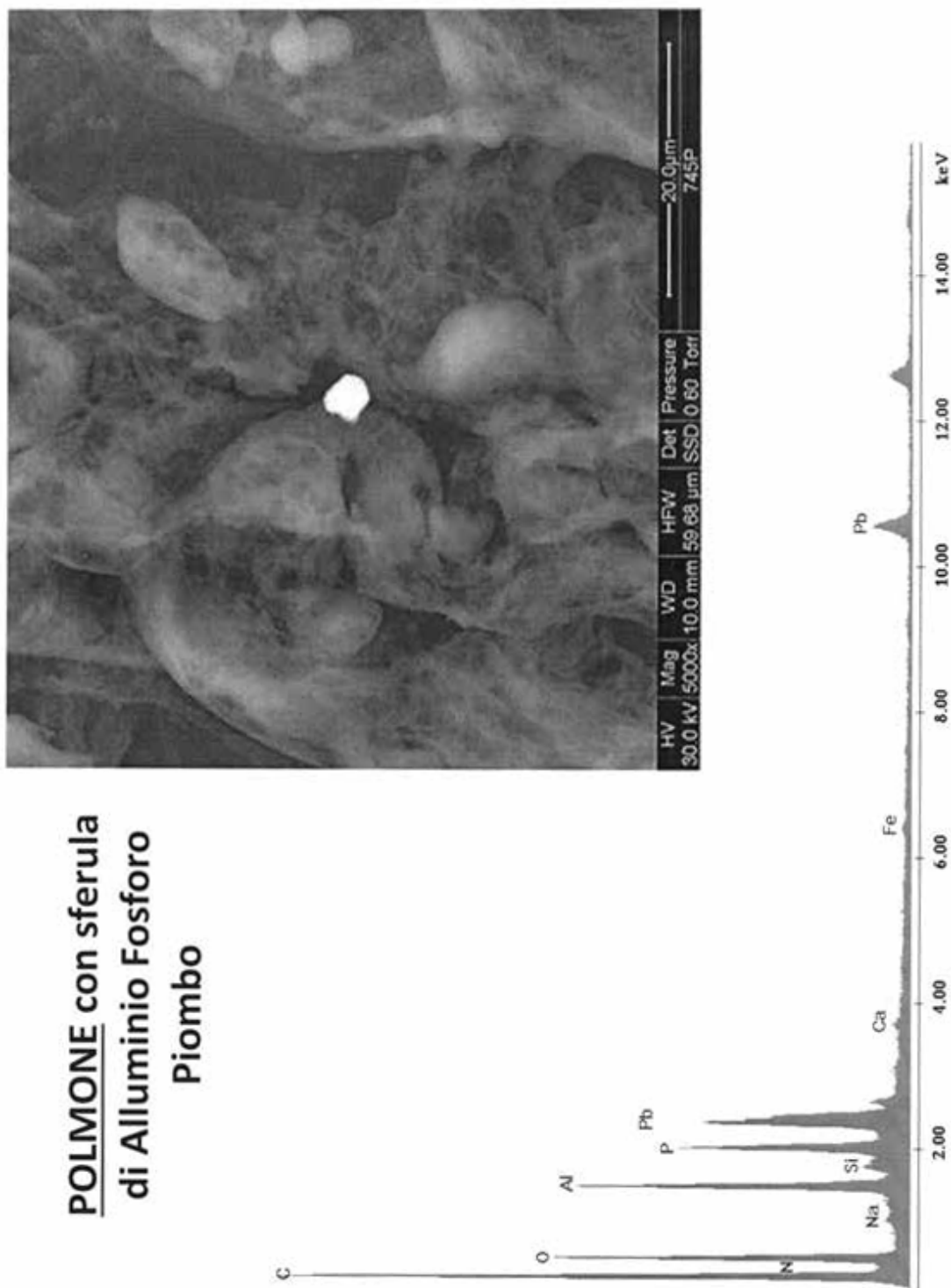
**POLMONE con  
particella di Zirconio**



**POLMONE con sferula di  
Titanio Ferro**

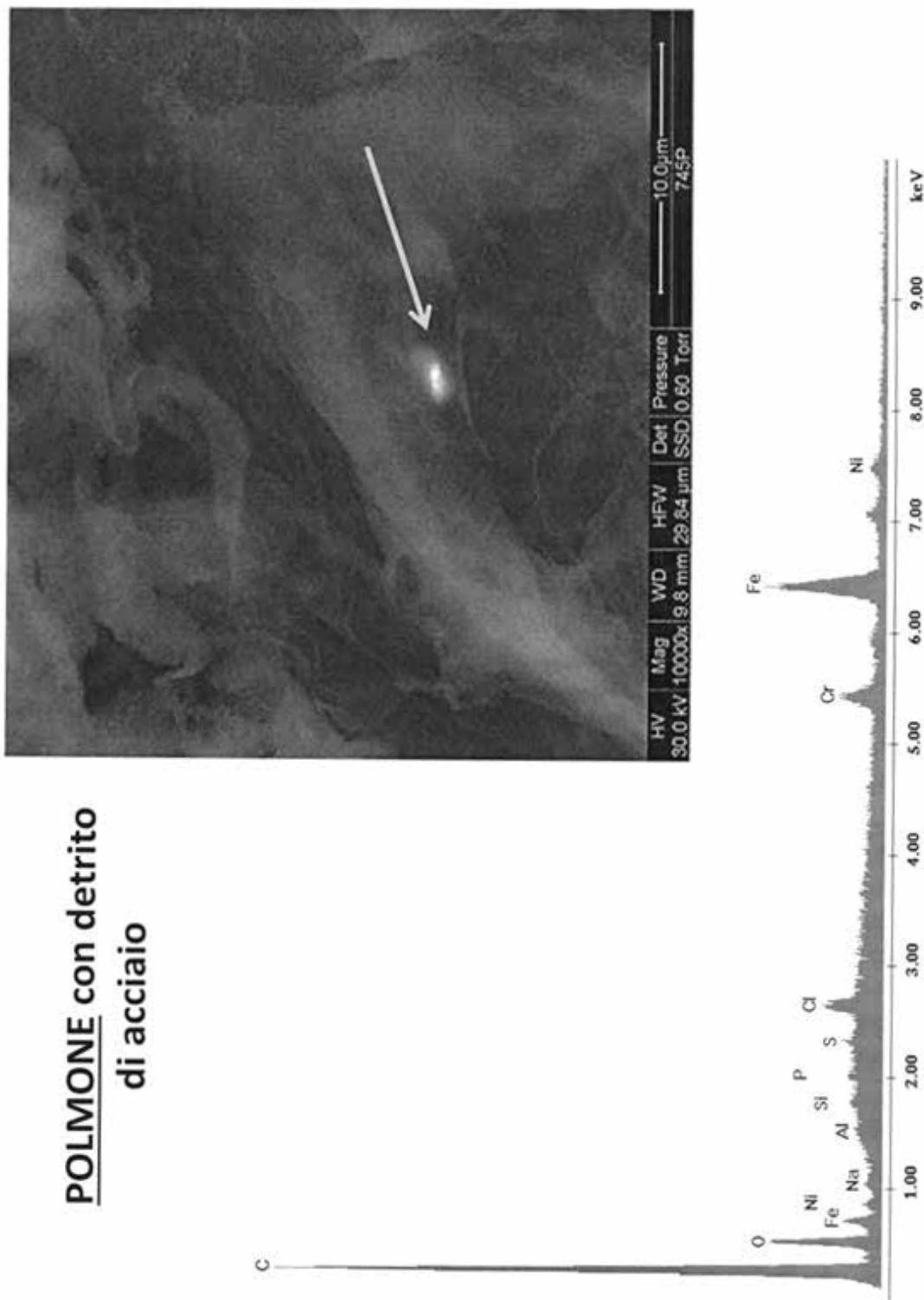


**POLMONE con sferula  
di Alluminio Fosforo  
Piombo**





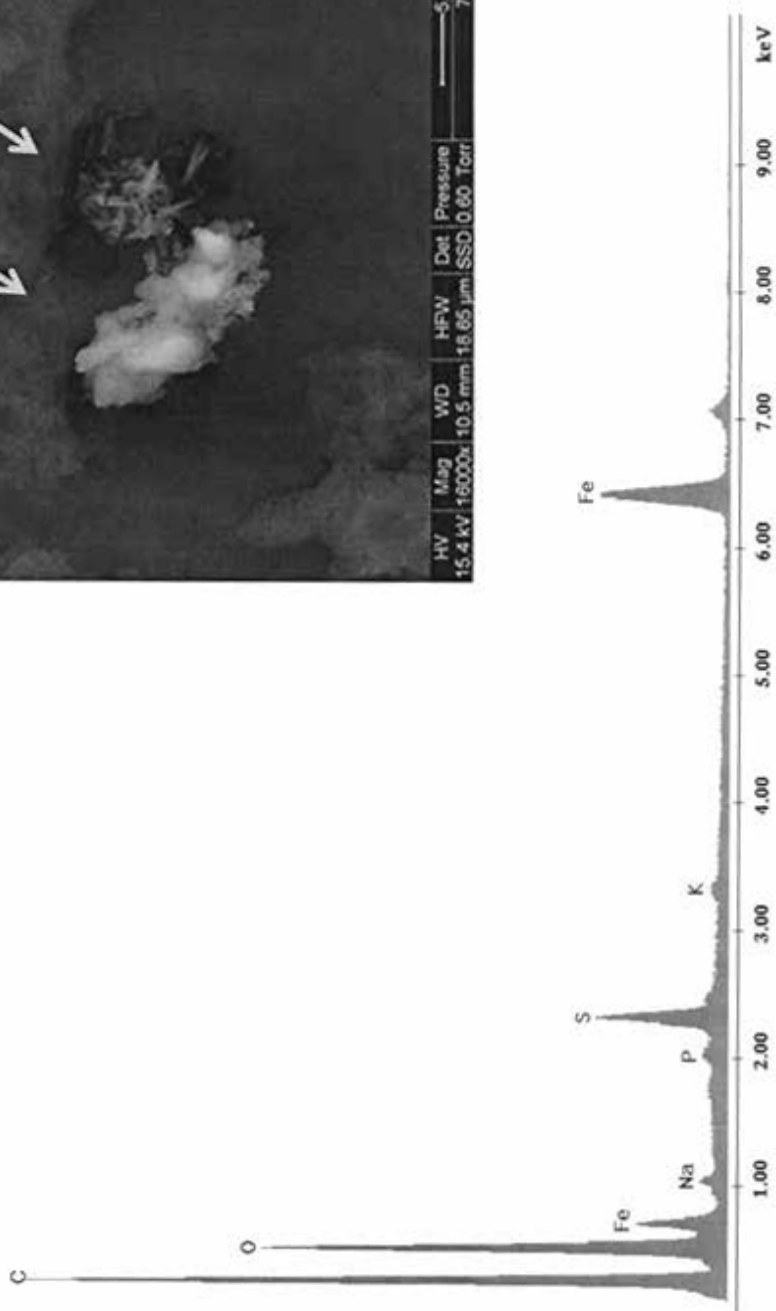
### POLMONE con detrito di acciaio



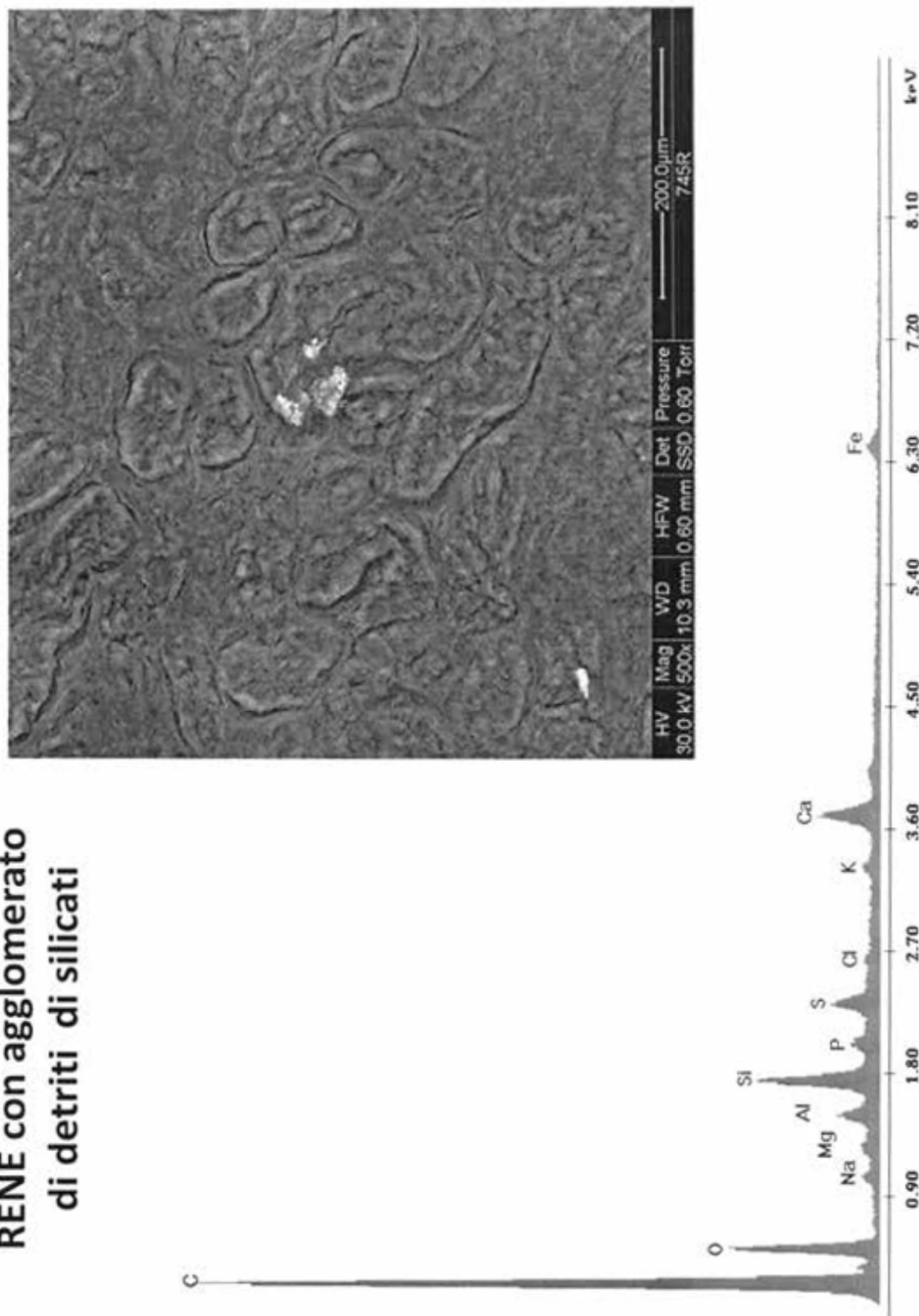


Campione 745 – capra di 6 anni IT072NU129

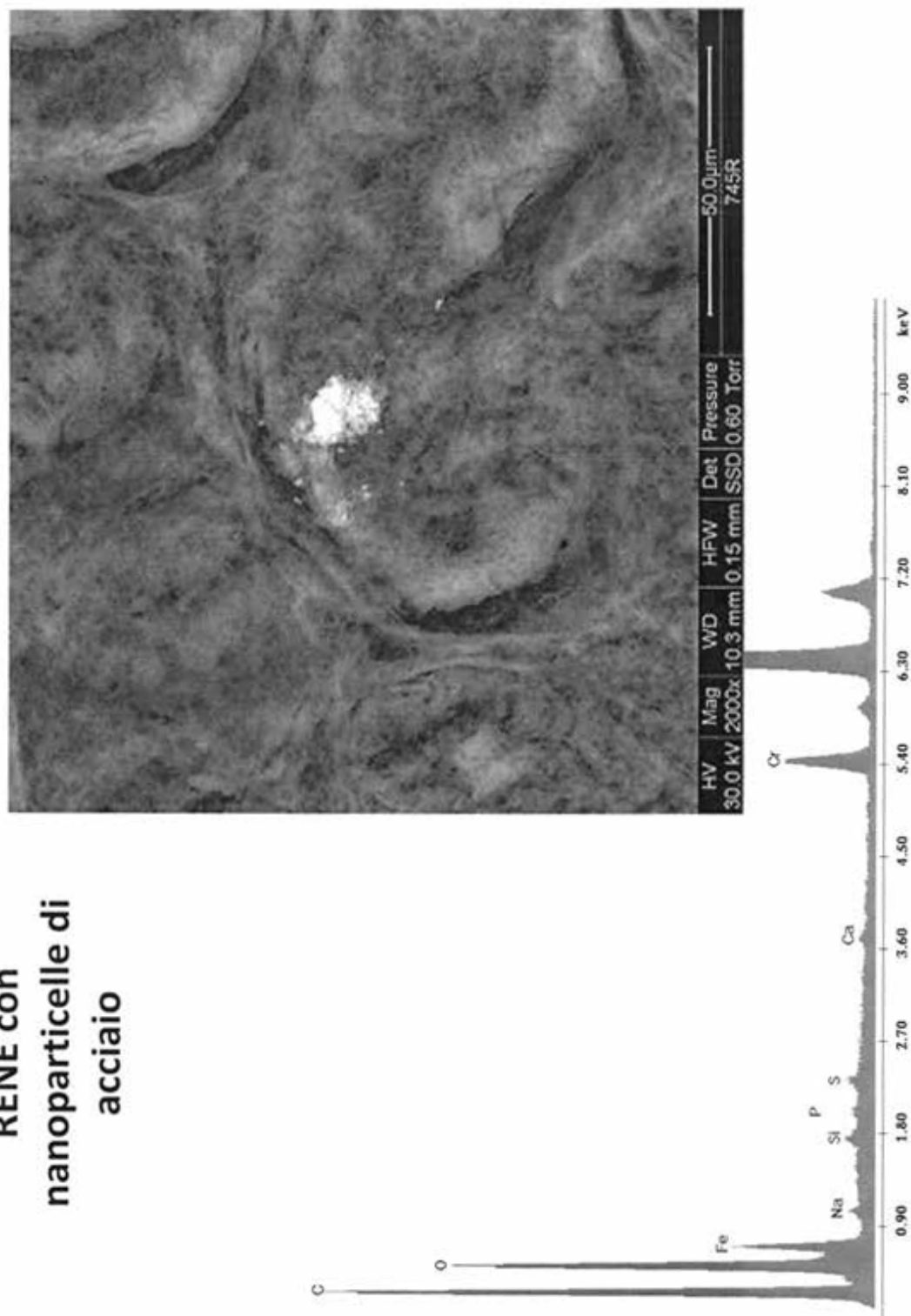
RENE con detritto di  
Ferro Zolfo



**RENE con agglomerato  
di detriti di silicati**



**RENE con  
nanoparticelle di  
acciaio**



## Rilievi istopatologici

N° 746-34128

ovino

**FEGATO:** epatite parassitaria e di iperplasia dei dotti biliari,

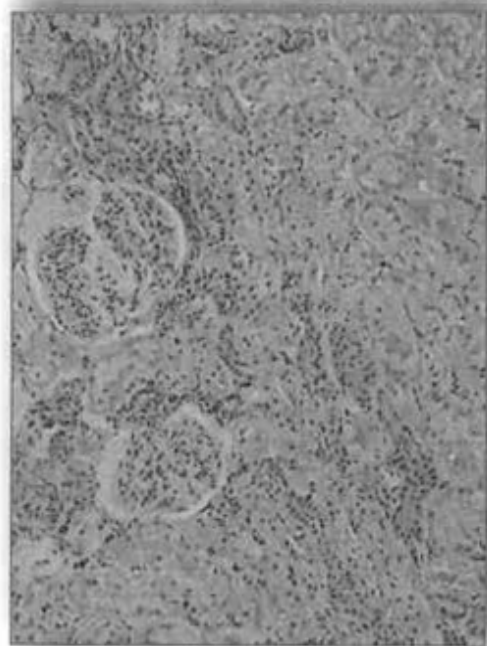
**RENE:** tubulonefrosi,

**POLMONE:** lievi fenomeni di polmonite interstiziale.



sezione istologica di fegato  
con formazione nodulare calcifica  
e-e, 4x

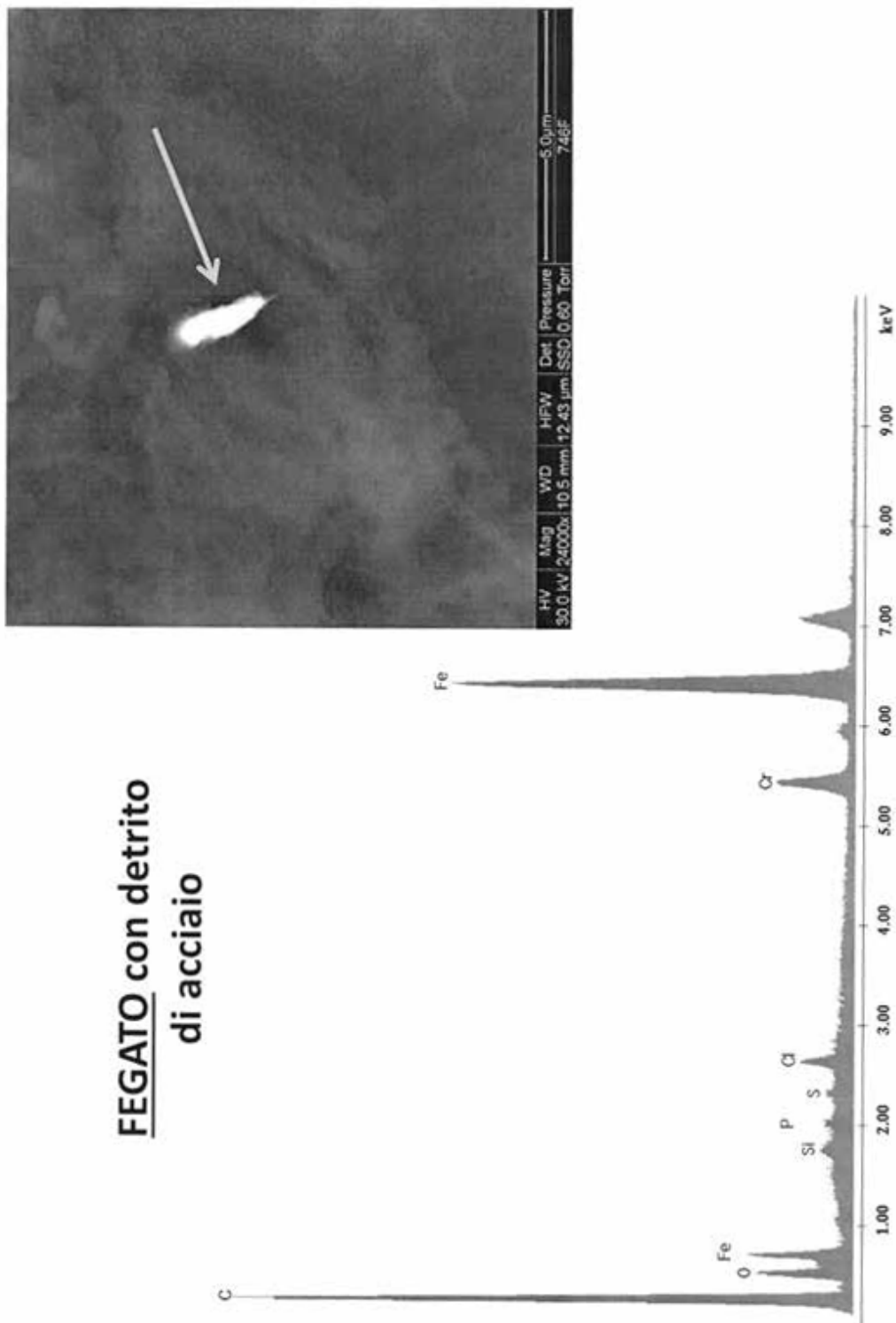
N° 746-34128 ovino



sezione istologica di rene  
e-e, 10x

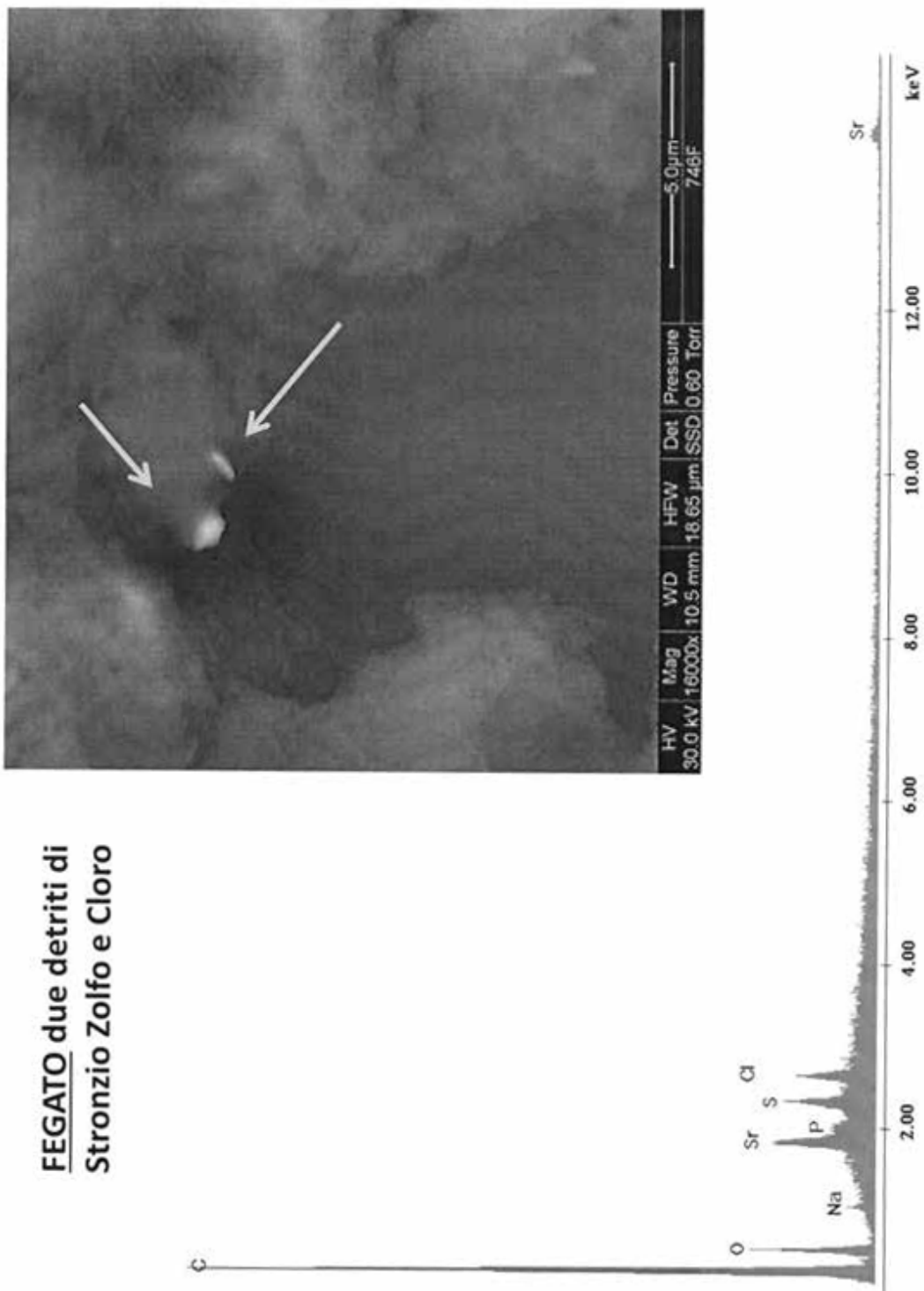
Campione 746 — pecora IT097CA150

**FEGATO con detrito  
di acciaio**





**FEGATO** due detriti di  
Stronzio Zolfo e Cloro



Campione 746 — pecora IT097CA150

**RENE con  
calcificazioni**

